



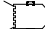

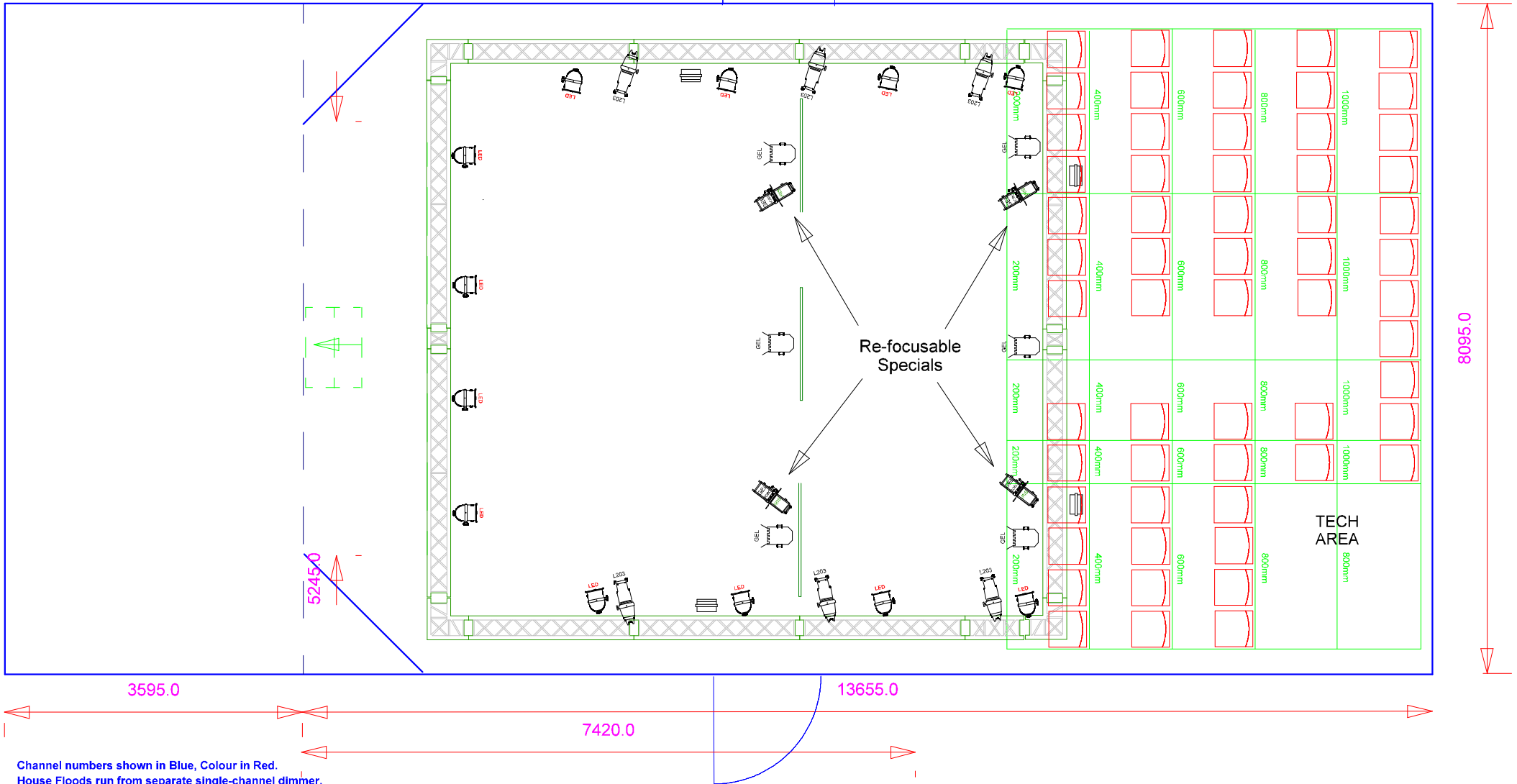


Greenside Venue : Rev 2.5 : Rev Date 08-07-2014  
 Fringe 2014 - Studio 1  
 Steve Robb - Live Systems Ltd

KEY :

-  500/650w Fresnel
-  Source4 Profile - Fixed
-  500w Zoom Profile
-  Par64 (LED)
-  1200w Fresnel
-  300w Flood



Channel numbers shown in Blue, Colour in Red.  
 House Floods run from separate single-channel dimmer.